

all in the family

When architect David Boyle redesigned this terrace it was more than just a renovation, it was a labour of love

STORY ELISABETH KNOWLES PHOTOGRAPHY SIMON KENNY





OPPOSITE a wall inset, painted Dulux True Red, provides a vivid backdrop for framed photos of two-year-old Amelia. Leather sofa from Freedom and spotted cushion from IKEA. THIS PAGE folding doors painted Dulux Shimmer conceal the study. The blue and yellow leadlight glass is from Australian Stained Glass Supplies and was bought to match existing panes. For stockists see Buyer's Guide.

RIGHT sliding windows open to reveal a feature wall of old beams from the original house. **BELOW** the marine ply dining table was designed by David and built by Jason. Chairs from Freedom. **BOTTOM LEFT** David Boyle (left) with Amelia, Melissa and Jason Boyle. **BOTTOM RIGHT** strips of mosaic tiles from Pazotti Tiles are reflected in a mirrored cupboard that extends up to the ceiling inside the skylight. **OPPOSITE** Jason cooks up a storm on his Capt N Cook barbecue from Barbeques Galore. For stockists see Buyer's Guide.





"The house was enclosed, dark and damp. Opening it up provided a degree of flexibility"

DAVID BOYLE ARCHITECT



Sitting discreetly among a row of single-storey terraces in Bondi, Sydney, is a residence that's a treasure trove of architectural ideas and detailed craftsmanship. Its unassuming facade reveals little of what lies within – a two-storey, three-bedroom family home with versatile indoor-outdoor living arrangements that make the most of every square metre of available space.

It's a home that was many years in the making, lovingly executed by owner-builder Jason Boyle, implementing the architectural ideas of respected Sydney architect David Boyle, his brother.

So let's add up the stress factors – not only do we have a DIY project, but we have a newlywed couple living in the home while they knock it down and rebuild it around themselves (for a full

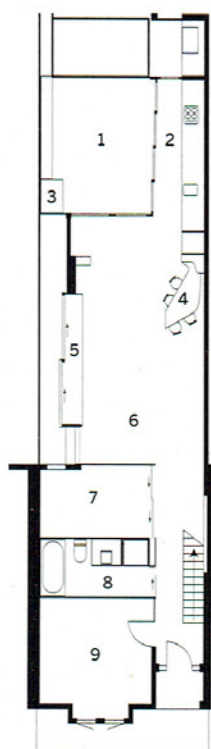
five years due to other work commitments) and we have a group of people who have broken the golden rules: never work with children and animals – or family.

Luckily, there was no sibling rivalry on this project, as the brothers have similar values and aesthetics when it comes to residential architecture. The benefits are obvious – thousands of dollars were saved on architectural planning and labour costs. But, while you could call this a 'budget' renovation, it most certainly looks nothing of the kind.

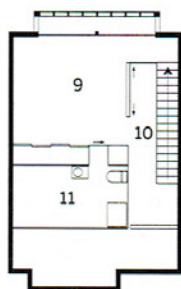
"Jason said I could do what I wanted, as long as the materials weren't expensive," says David. "Because Jason and I are close, even though the materials were inexpensive, the job could be labour-intensive, so it's a house with quite a lot of detail." ▶

THIS PAGE homeowner Jason Boyle (pictured) installed the kitchen cabinetry to keep costs down. It's from Seabreeze Kitchens. The Corian benchtop is from Sydney Countertop Fabrications and has an integrated sink. OPPOSITE, TOP the courtyard's mural was inspired by aerial photos. Dulux colours were used. OPPOSITE, BOTTOM the concrete planter with imprinted artwork was created by David Boyle. For stockists see Buyer's Guide.





Ground floor

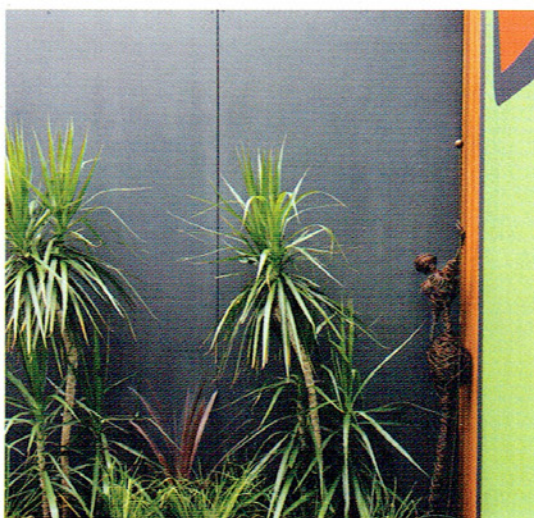


First floor

- 1 Courtyard
- 2 Kitchen
- 3 Dog house
- 4 Dining table
- 5 Window seat
- 6 Living area
- 7 Study
- 8 Bathroom
- 9 Bedroom
- 10 Void
- 11 Ensuite

OH BROTHER, WHAT A TASK!

"It really was an amazing joint effort," says homeowner Melissa Boyle of the renovation her husband Jason and brother-in-law David undertook. From the smooth way the kitchen drawers slide out to the way the joinery has been carefully crafted, every little detail has been considered. "Nothing gets past David and Jason. At times I'd think they were getting bogged down with the tiniest things, but then the end result would make it all worthwhile," she says. ▶





A teak dining setting and chairs from Jati sit atop the batu decking. BELOW labrador Leo has his own architect-designed home, made from concrete and cedar. For stockists see Buyer's Guide.

“The site didn't have a huge amount of area, so we needed to be versatile. For example, they wanted to have a car space, so we put a hard surface on the courtyard to bear its weight” **DAVID BOYLE ARCHITECTS**

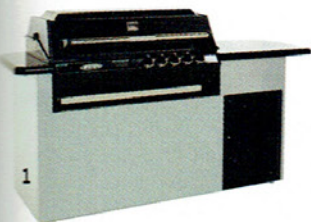


◀ There is also a “personalisation of details” in the house, David says, which are his favourite touches in the home. A lot of time was spent giving the home qualities that would usually blow the budget if tradesmen had to be hired.

There is handcrafted joinery throughout, such as the marigold dining table with integrated shelving, wine racks and a drop-down extension – designed by David and built by Jason. But, with small touches abound, it's not at the expense of the bigger picture. This is, after all, a family home, to be shared by Jason, his wife Melissa and children Amelia, two, and James, seven months.

“The brief was to provide more useable area,” says David. “The house was enclosed, dark and damp. Opening it up provided a degree of flexibility. The family can now use every inch of available space. The site didn't have a huge amount of area, so we needed to be versatile. For example, they wanted a car space, so we put a hard surface on the courtyard to bear its weight.”

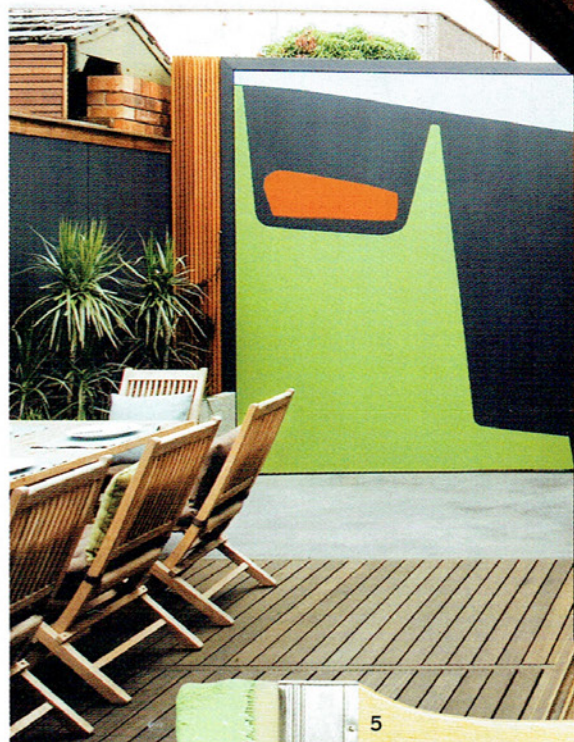
The ensuite is perhaps the most awe-inspiring example of space-saving design. “The bathroom fits into a tight space under the front pitch of the roof,” says David, “so it had a triangular form. We wanted to make it unique and spacious, so we linked the flow with rounded corners.” It's also in the bathroom that we see another example of cost-saving labour – “Jason cut the mosaic tiles into strips so the tiler could come in and just lay them. That's dedication!” says David. ▶



2



3



5

COLOUR CONNECTION

Splashes of vibrant colour add interest in this home. A courtyard mural (above) lends a touch of the abstract. "I took some aerial photos on a flight to Albury," says David, "and this was the starting point for the mural. It's a good way of introducing some green, and it blends with the charcoal of the courtyard walls." Inside, additional panels of stained glass supplement the home's original stained glass.



4

Get the look

For Jason and Melissa Boyle, the delight is in the details



6



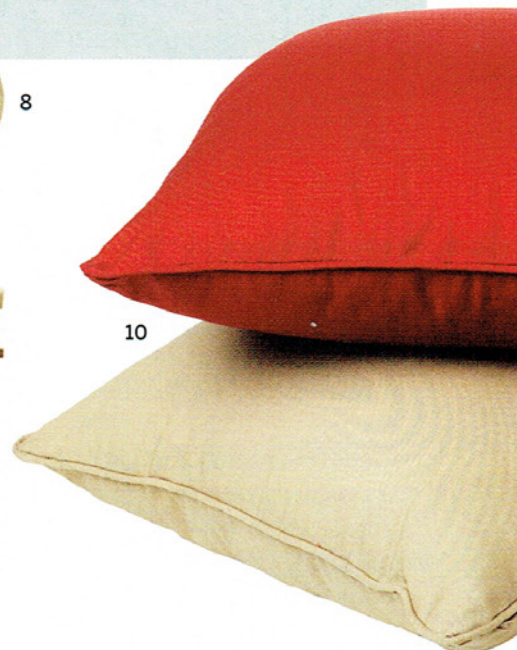
7



8



9



10

- 1 **Barbie bliss** Turbo Classic Five-Burner Barbecue Island, \$1999, Barbeques Galore.
- 2 **Photo fix** slim box frame, 10x8", \$35, Corban & Blair.
- 3 **Fine fold** Meranti bi-fold windows, POA, Canterbury Windows.
- 4 **Sofa so good** George 2.5 seater sofa in cowhide leather, \$1599, OZ Design Furniture.
- 5 **Colour code** Wash and Wear paint in Applegate and Deep Walnut, from \$75/four litres, Dulux.
- 6 **Basin attraction** Porcher Acacia wall basin, \$367.90, Reece.
- 7 **In the mix** Teknobili Oz T2 sink mixer, \$227, Reece.
- 8 **Under covers** Lexington coverlet set in pecan, \$242.95, Rapee.
- 9 **Good wood** folding table, \$698, and folding chairs, \$365/each, Cotswold Furniture.
- 10 **Cushion comfort** Eden cushions in Buddhist Red and Stone, 43cm, \$21.95/each, Rapee. **H&G** For stockists see Buyer's Guide