

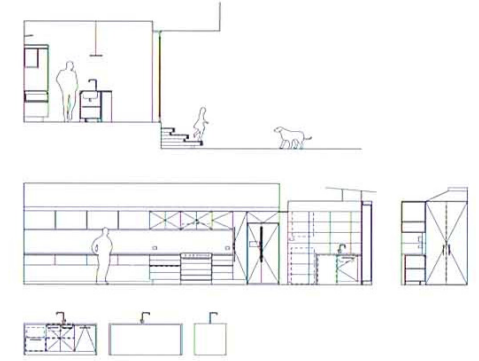
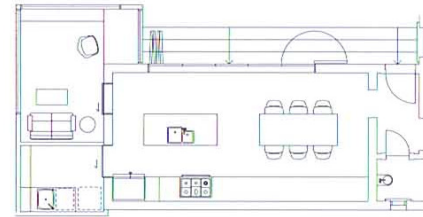
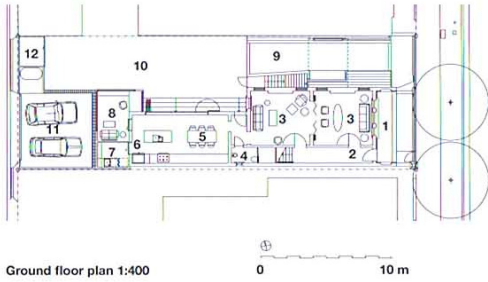
terrace treat

David Boyle has redesigned this inner-city terrace house to stand out from the crowd in more ways than one. **Story by Penny Craswell Photography by André Fleuren**

THIS PAGE: An overview of the combined kitchen and dining area. FOLLOWING PAGES: Bifold doors in the kitchen and dining space access the house's outdoor space and lap pool.



- 1 Verandah
- 2 Entry
- 3 Living
- 4 Bathroom
- 5 Dining
- 6 Kitchen
- 7 Laundry
- 8 Study
- 9 Pool
- 10 Lawn
- 11 Carport
- 12 Store
- 13 Bedroom



Ground floor plan 1:400 0 10 m

First floor plan 1:400

Kitchen plan 1:150 0 5 m

Kitchen elevations 1:150

RENOVATIONS OF THE UBIQUITOUS terrace house all tend to look alike. Architects working within the same basic structure and size limitations have little chance to do much that is out of the ordinary. However, architect David Boyle, working on this terrace in Sydney's inner west, has created something truly different, thanks to a four-metre strip of land running along the northern side of the building. Making the most of the outdoor space, David has combined dining and kitchen spaces and linked them with bifold doors to the greenery outside.

The kitchen-dining combination was built with three things in mind – views, light and ventilation. “A large opening cut into the side wall links the kitchen to the yard with a set of bifold doors,” explains David, “and, importantly, also allows direct sight lines to the new pool so the owners can monitor their small children.”

On the south wall opposite the folding doors, David has created a “working wall.” With fridge, oven cabinet and drawers at one end, the benchtop extends the full length of the room in understated white, with natural timber cabinets and shelves running overhead, mirroring the timber of the floor. At the dining end of the room, the benchtop provides extra space for food preparation or layout, while the open shelving overhead allows items to be displayed and accessed easily.

An island bench houses the sink, dishwasher and microwave and is in perfect symmetry to the dining table, also white, connecting a line lengthways through the centre of the room. Lighting is subtle, with wall-mounted uplights providing soft light and pendants as features. The palette is simple and modern with a focus on natural materials.

Interrupting the language of the streetscape, David has created a contemporary architectural insertion on the first floor – an ensuite bathroom that cantilevers over the lap pool. Set back from the facade, the addition is visible from the street as a glass rectangular box, framed in timber and with a geometric sloping shape above. “This project explores a contemporary infill to the ‘space between’ the terraces ... It activates the streetscape with new architectural elements,” says David.

From within, the large picture window looks out onto district and city views. Privacy is maintained through an external louvre blind that can be adjusted to protect privacy while maintaining views, light and ventilation. The space has a modulated ceiling and windows on three sides, so that sunlight and ventilation are available at all times of day. The fittings in the bathroom are treated as individual objects within the box – the bath is freestanding, the toilet simple and wall hung. The sink and cabinets form another separate element along one wall, while the shower is simply a glass box. Once again, the lighting is soft and indirect, except for practical downlights over the vanity. The main bathroom on the upper level retains the same minimal palette and materials. **K+B**

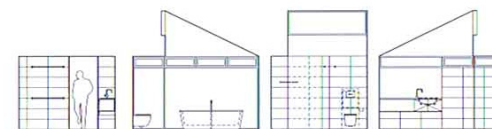




OPPOSITE PAGE: The ensuite bathroom extends from the main structure of the house over the lap pool. THIS PAGE: External louvre blinds maintain privacy in the bathroom.



Ensuite plan 1:150



Ensuite elevations 1:150





ARCHITECT

David Boyle Architect
17 Como Parade
Pretty Beach NSW 2257
Tel: +612 4360 1838
Fax: +612 4360 1878
Email: info@davidboylearchitect.com.au
Web: www.davidboylearchitect.com.au

PRACTICE PROFILE

A small practice specializing in residential architecture

PROJECT TEAM

David Boyle

BUILDER

Jason Boyle Constructions

JOINER

Alice Vario

CONSULTANTS

Interiors David Boyle Architect

TIME SCHEDULE

Design, documentation

12 months

Construction 7 months

PRODUCTS KITCHEN

Internal walls and ceiling

Plasterboard with paint finish

Flooring Blackbutt timber strip flooring

Joinery CaesarStone 'Snow' benchtops;

Cararra marble splashbacks; Blum

Blumotion soft close drawer runners;

White oak timber veneer cabinets with

solid timber edge

Lighting El water

wall-mounted uplight; Studio Italia

Puraluce pendants; Haeggen AL5040

set in cabinet

Sinks and tapware

Olivetti stainless steel undermount sink;

Scala square mixer

Appliances Smeg

E322 rangehood; Smeg SA 8210X

dishwasher

Windows and doors

Timber-framed bifold doors

Timber-framed bifold doors

Timber-framed bifold doors

Timber-framed bifold doors

Timber-framed bifold doors

Timber-framed bifold doors

Timber-framed bifold doors

Timber-framed bifold doors

Timber-framed bifold doors

Timber-framed bifold doors

Timber-framed bifold doors

Timber-framed bifold doors

Timber-framed bifold doors

Timber-framed bifold doors

Timber-framed bifold doors

Timber-framed bifold doors

Timber-framed bifold doors

Timber-framed bifold doors

Timber-framed bifold doors

Timber-framed bifold doors

Timber-framed bifold doors

Timber-framed bifold doors

Timber-framed bifold doors

Timber-framed bifold doors

Timber-framed bifold doors

Timber-framed bifold doors

Timber-framed bifold doors

Timber-framed bifold doors

Timber-framed bifold doors

Timber-framed bifold doors

Timber-framed bifold doors

Timber-framed bifold doors

Timber-framed bifold doors

Timber-framed bifold doors

Timber-framed bifold doors

LEFT: The modulated ceiling and windows on three sides of the bathroom allow ventilation and light at all times of the day and night.